

Building stronger workplace relationships: a toolkit for school staff in Wales

Take a look at our latest toolkit to help you build a stronger sense of belonging, community, and mutual support among staff in your school. Use these free resources yourself and share them with colleagues.

And remember, the Staff Wellbeing Service, funded by the Welsh Government, offers free tailored support to help schools build a culture that prioritises staff wellbeing. **Sign up now at no cost to your school** or find out more by emailing: **staffwellbeingservice@edsupport.org.uk**



To read a resource in Welsh, click on it, then select 'CY' at the top of the webpage.

For school leaders and managers:

How can you foster workplace relationships and connection in your school?

Practical tips from a Staff Wellbeing Advisor in Wales.



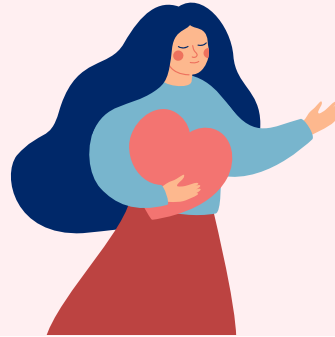
5 Tips for active listening

Learn the BUILD technique to strengthen listening skills and improve communication with colleagues.



Wellbeing Advisory Service

Are you a school leader or wellbeing lead who wants to transform how your school approaches staff mental health and wellbeing?



Professional Supervision

When leaders and managers have access to learning and reflection opportunities it has wide-ranging benefits to workplace relationships.



For all staff:

Building collegiate relationships in schools

Learn why strong relationships between staff are key to stronger school communities and explore ideas to foster a more collegiate working culture.



Setting boundaries: a guide for staff in schools

Read our guide with tips for school staff to set and keep clear boundaries to maintain healthy workplace relationships.



Dealing with difference: why workplace relationships aren't always easy

This resource unpacks the complexities of workplace dynamics and offers guidance for embracing different perspectives.



Loneliness: a guide for teachers and education staff

Even in busy schools, staff can feel isolated. This guide explores why that happens and what can be done to feel more connected.



Download our bilingual helpline [poster](#) to share with staff. Our emotional support helpline is available to all education staff in Wales, 24/7, 7 days a week: **08000 562 561**.